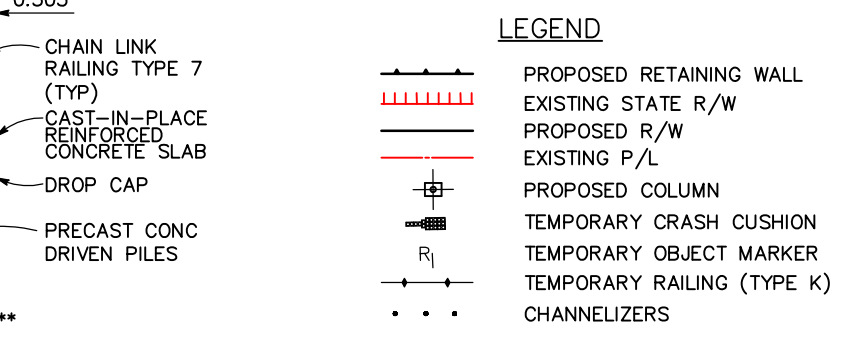
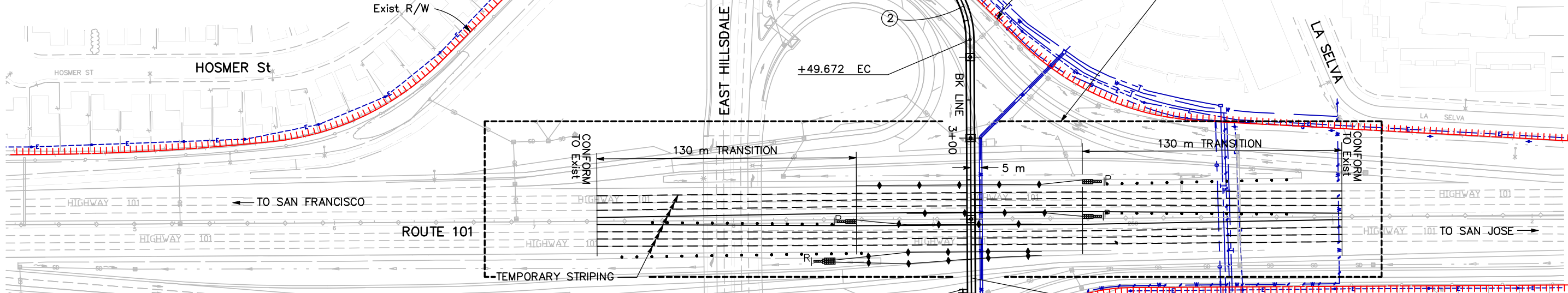
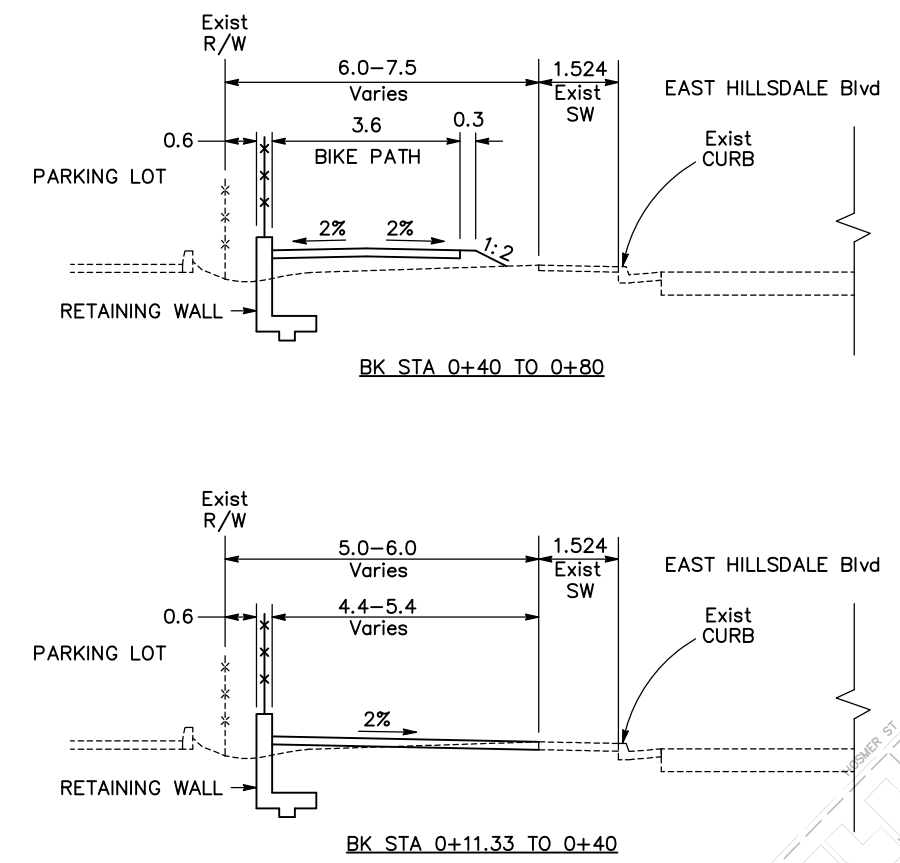
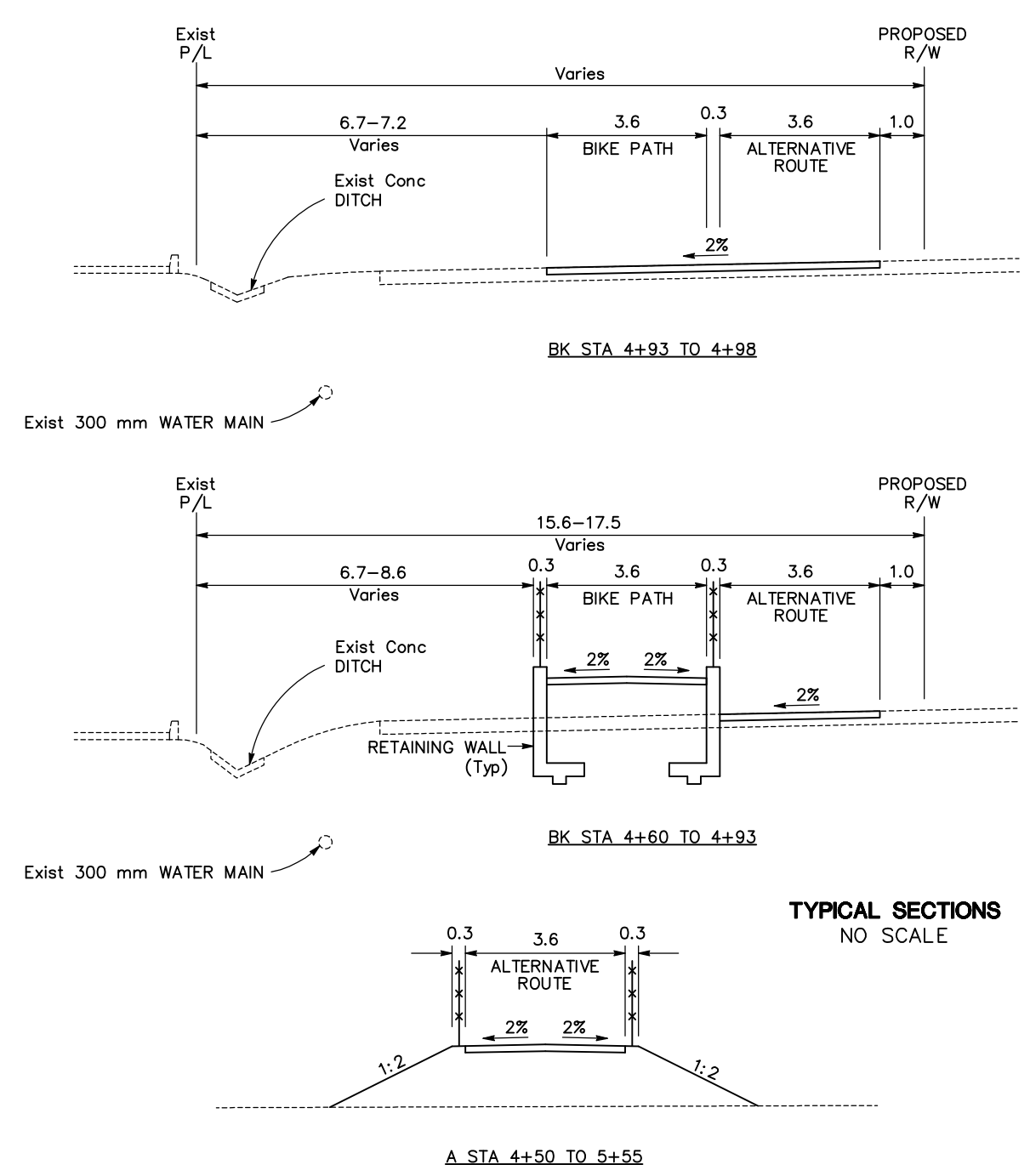


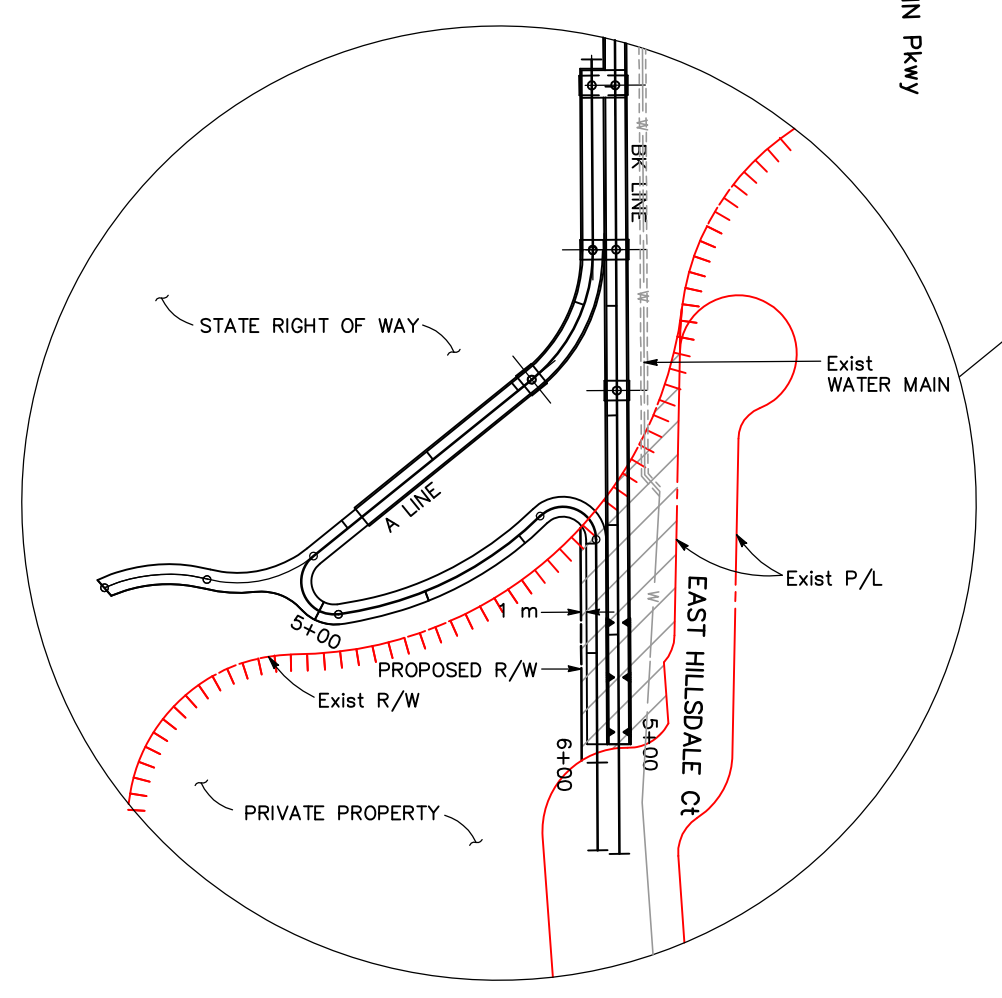
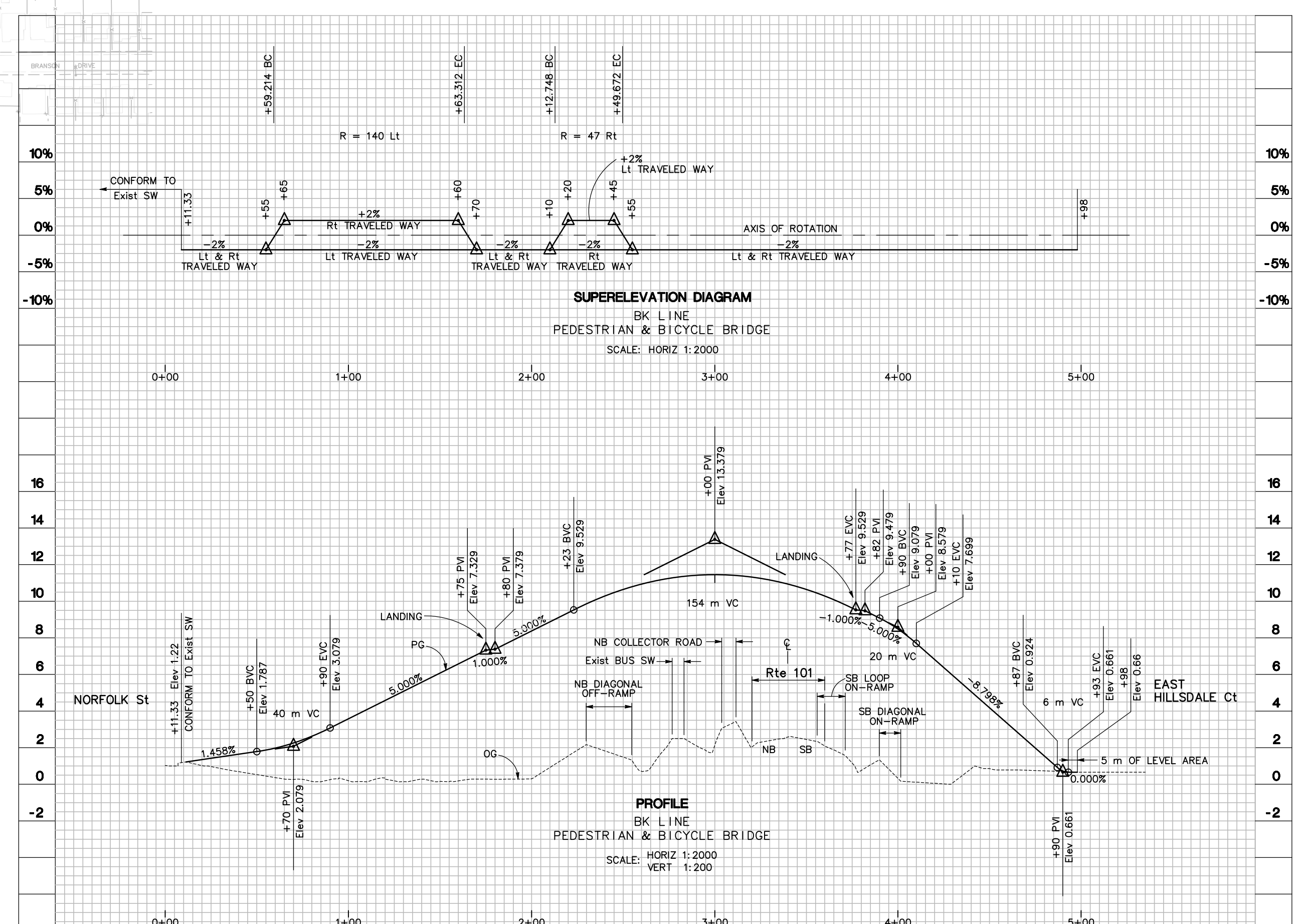
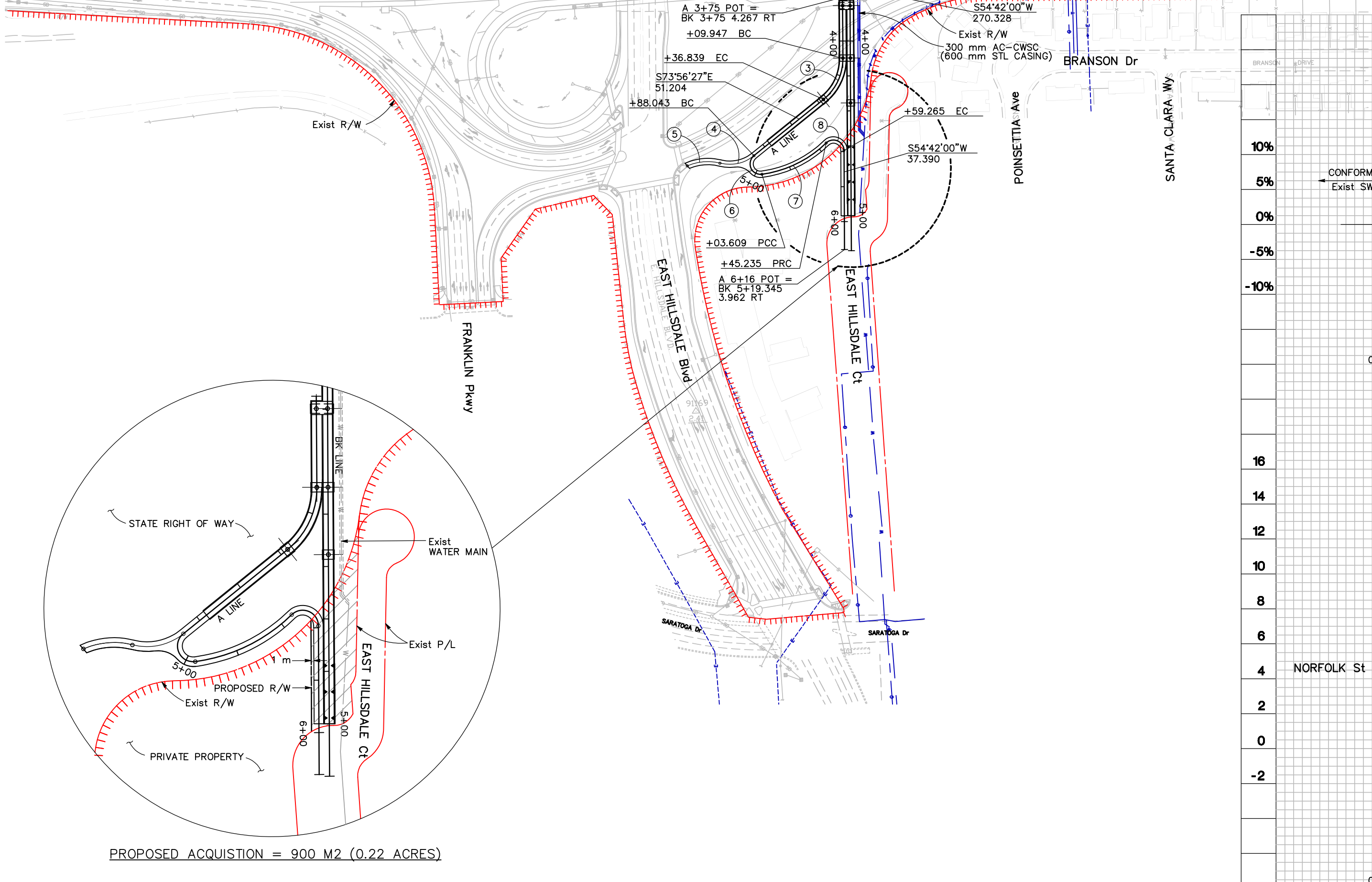
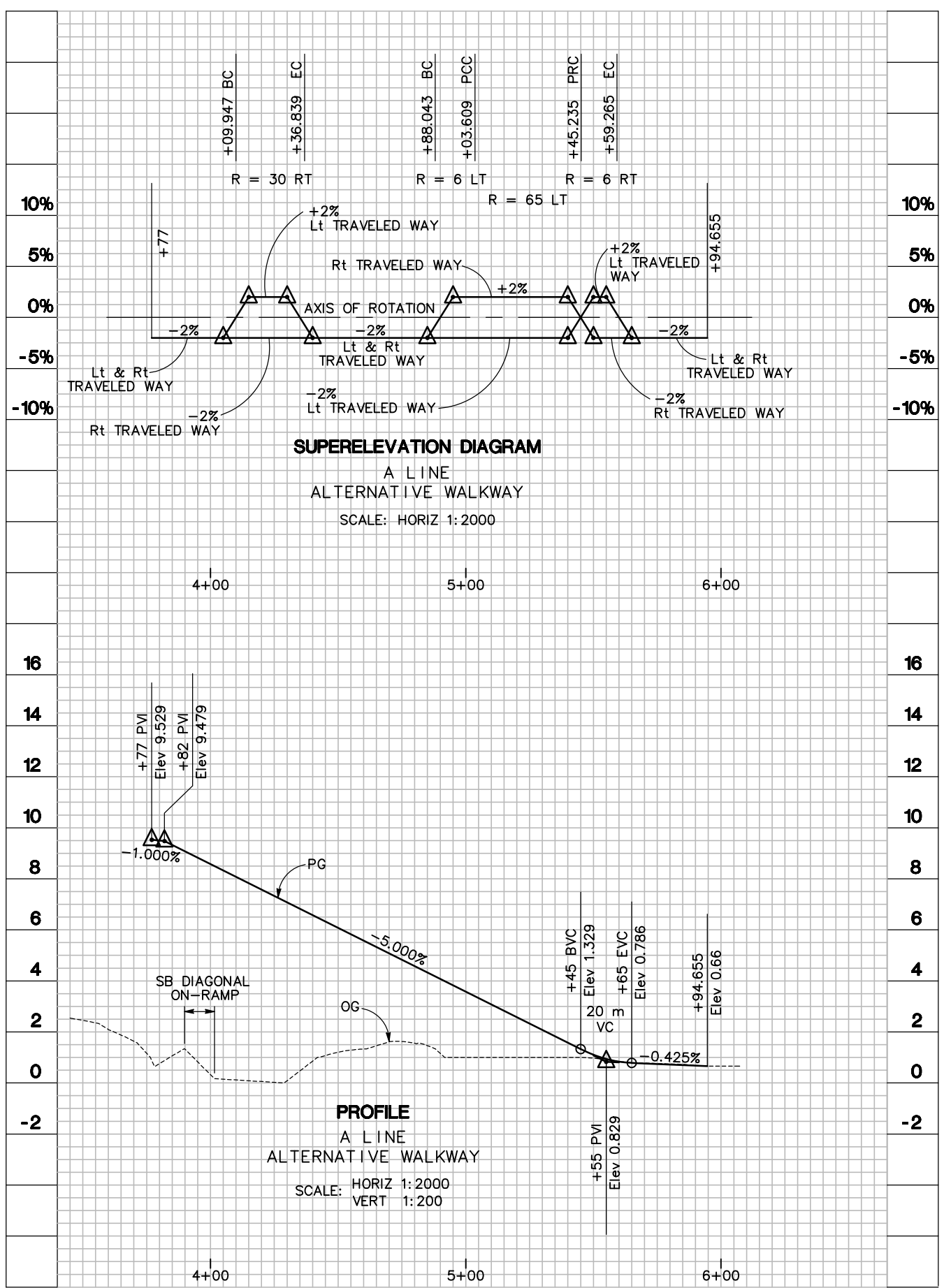
**PROPOSED  
PEDESTRIAN AND BICYCLE  
BRIDGE ALTERNATIVE  
AT  
HILLSDALE BLVD AND HIGHWAY 101  
IN CITY OF SAN MATEO,  
SAN MATEO COUNTY**

**PRELIMINARY  
GEOMETRIC APPROVAL DRAWING  
KP 17.94 (PM 11.15)**



**CURVE DATA**

NO.	RADIUS	DELTA	TANGENT	LENGTH	NORTHING	EASTING
①	140.000	42°36'10"	54.588	104.099	617443.944	1842323.296
②	47.000	45°00'45"	19.474	36.924	617426.681	1842130.643
③	30.000	51°21'33"	14.425	26.892	617323.673	1842007.194
④	22.000	53°14'31"	11.027	20.443	617330.150	1841955.775
⑤	29.000	38°08'23"	10.025	19.304	617312.124	1841908.067
⑥	6.000	148°38'33"	21.376	15.566	617303.243	1841948.030
⑦	65.000	36°41'32"	21.555	41.626	617343.166	1841991.471
⑧	6.000	133°58'32"	14.127	14.030	617273.406	1841978.259



ALL DIMENSIONS ARE IN METERS UNLESS OTHERWISE SHOWN